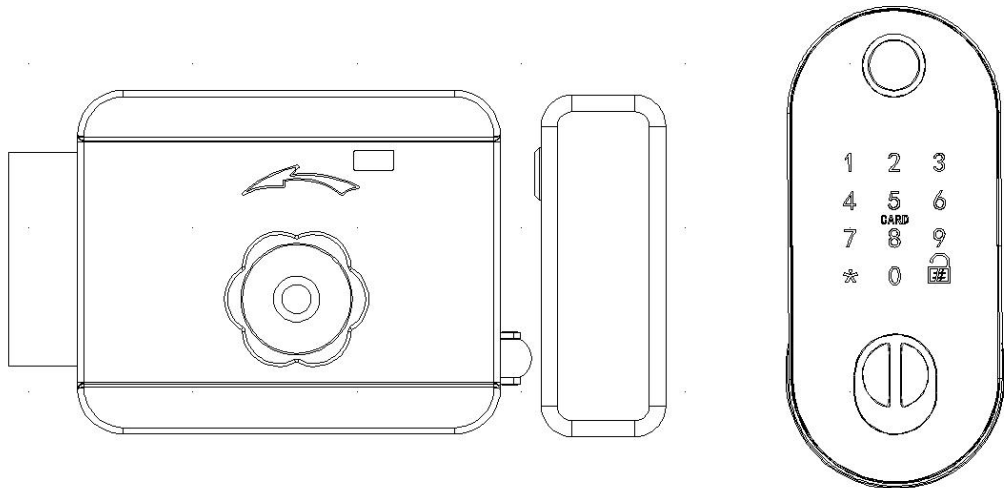
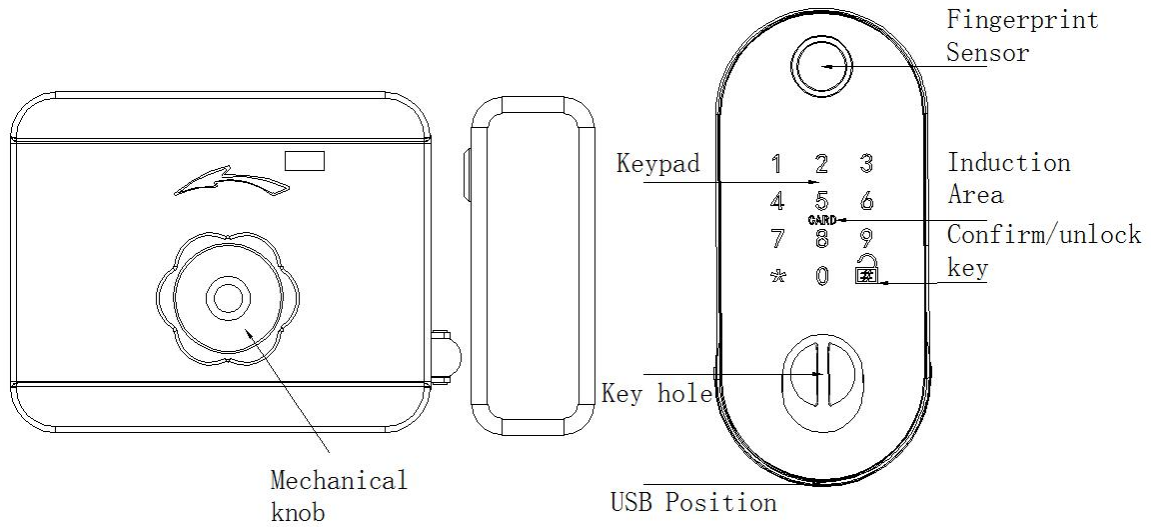


Smart lock User manual



- Thank you for purchasing this product
- Please read this manual carefully before use
- Please keep this manual for future reference
- This instruction manual is subject to change without notice
- The company does not bear the accident and harm caused by the user's wrong operation

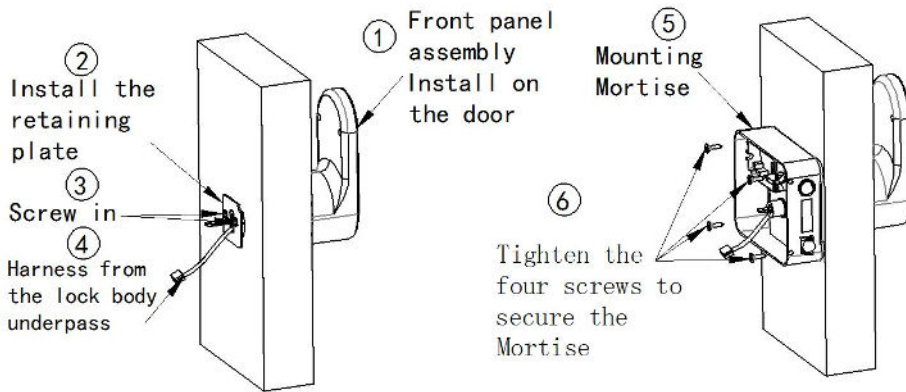
Product introduction



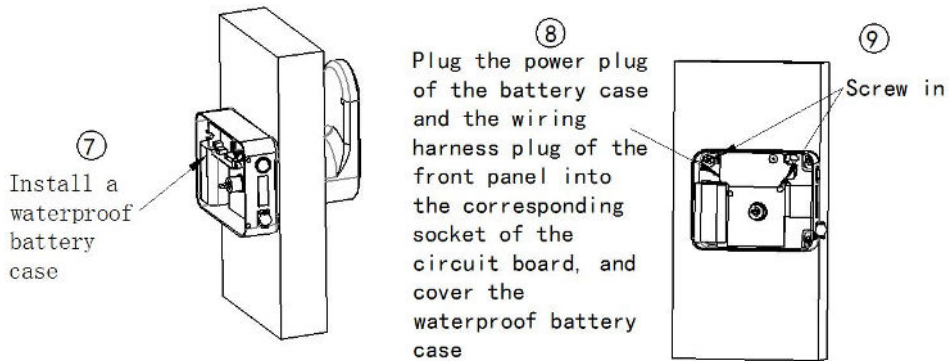
Installation instructions

1. Install and fix front panel components:

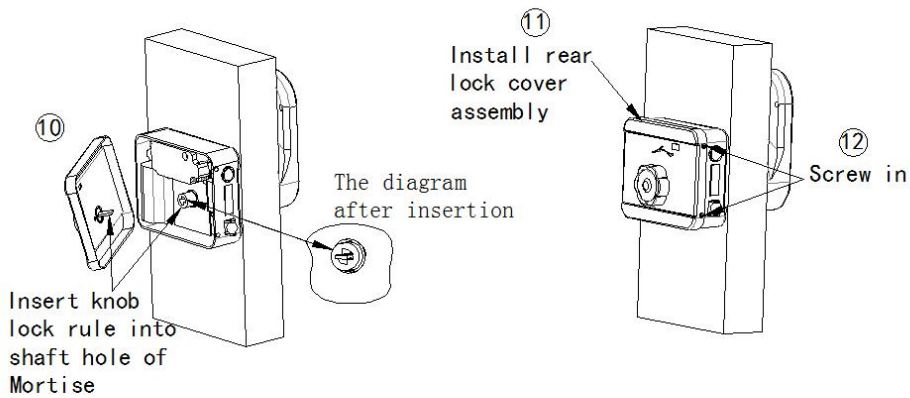
2. Install fixed lock body:



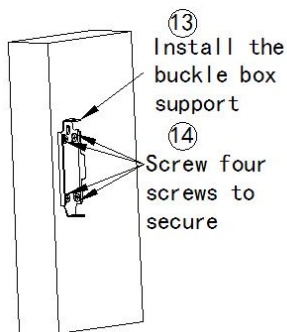
2. Install waterproof battery box and circuit board waterproof box:



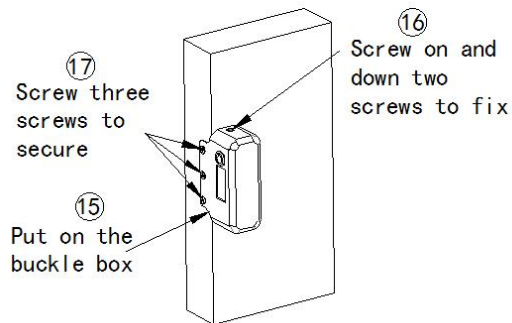
3, install the lock body back cover assembly:



4. Install the buckle box bracket:

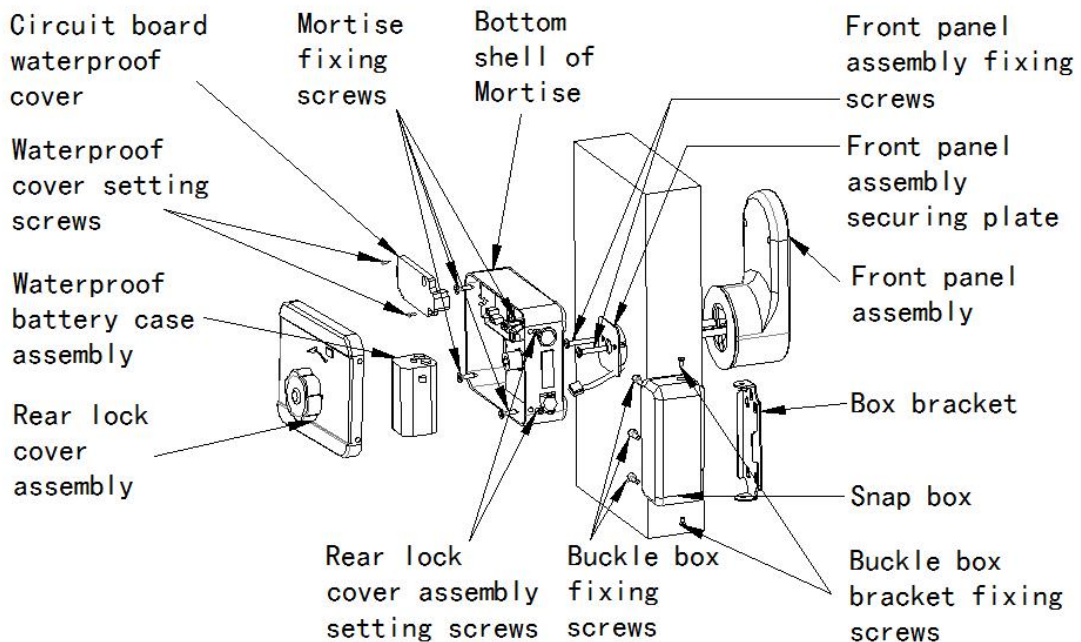


5, installation buckle box:



Installation diagram

Installation diagram



1、 Normal description

- 1) Press "SET" key for 5s: Restore to factory default mode;
- 2) Administrator information: Administrator fingerprint/password/IC card;
- 3) Unlock information: include administrator and user information;
- 4) Touch key "***": clear the previous input password key;
- 5) Touch key "*" then "#": Menu function.

2、 Factory default mode

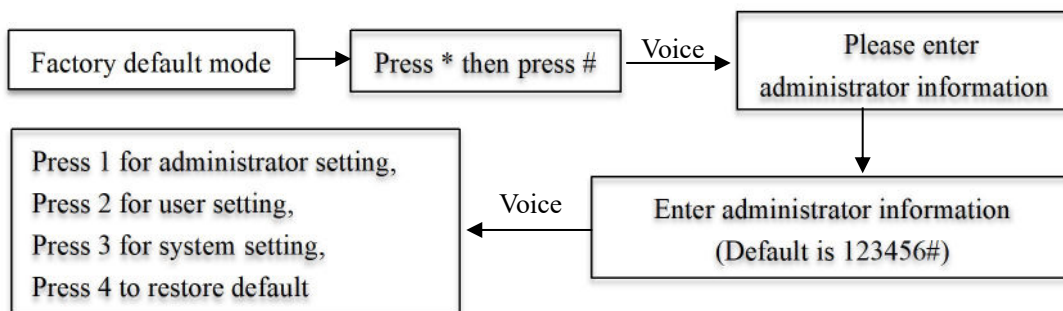
- 1) The default administrator password is **123456**, any fingerprint, password or IC card can open the lock in factory default mode.
- 2) After inputting the administrator information, any fingerprint, password or IC card which are not registered can't open the lock.

3、 Language setting (In factory default mode)

The lock come with "English" voice as standard, and you can switch to other language by following operations.

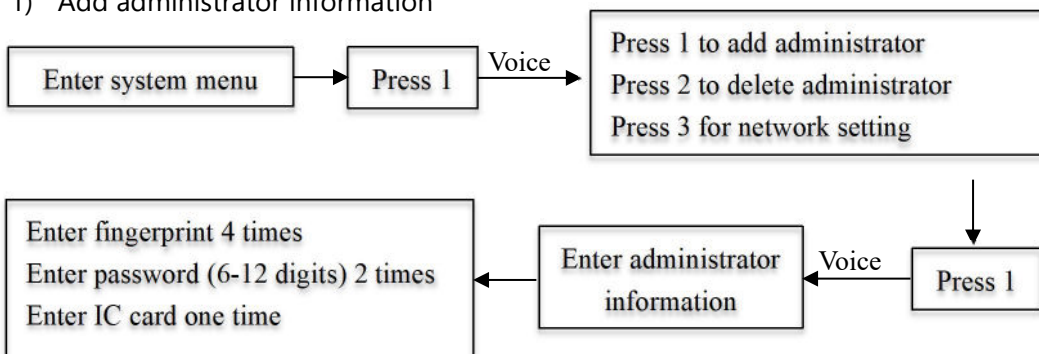
333666990#	Chinese
333666991#	English
333666992#	Arabic
333666993#	Russian
333666994#	Portuguese
333666995#	Thai
333666996#	Spanish
333666997#	Vietnamese
333666998#	Indonesian

4、 Enter system menu

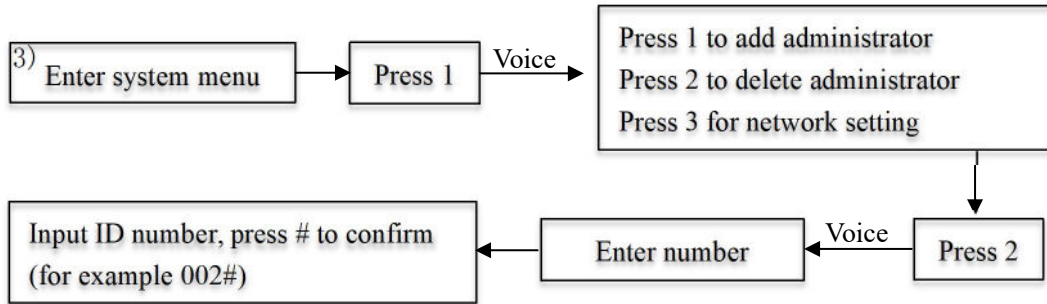


5、 Administrator setting

- 1) Add administrator information

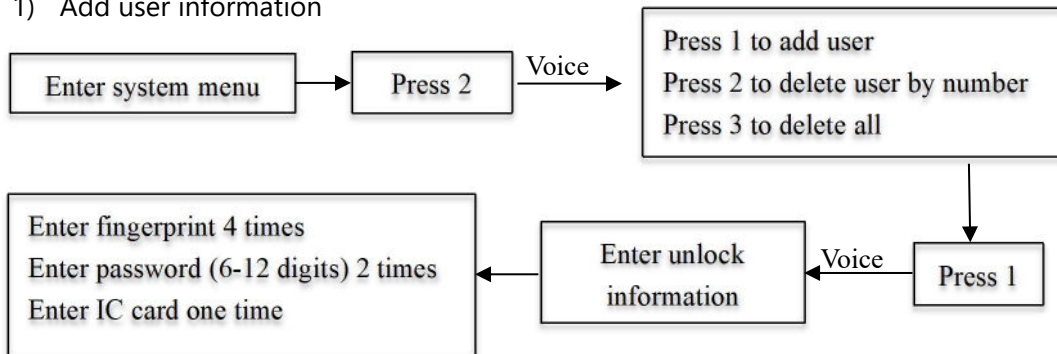


2) Delete administrator information

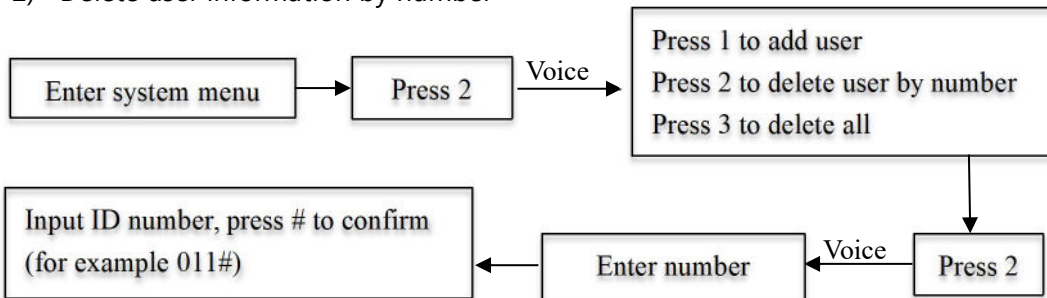


6. User setting

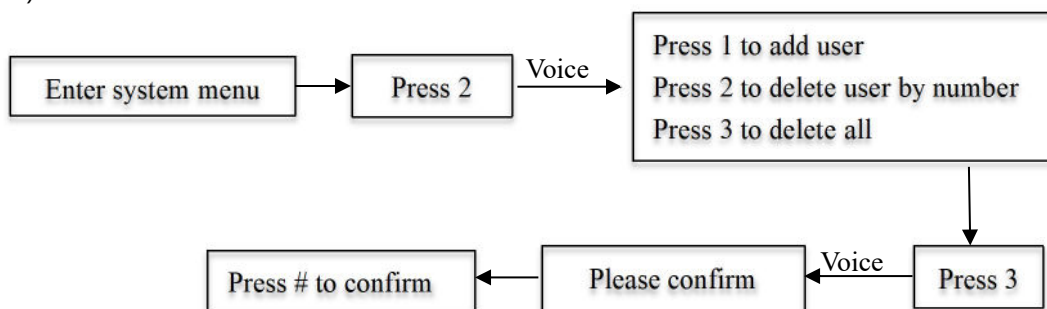
1) Add user information



2) Delete user information by number

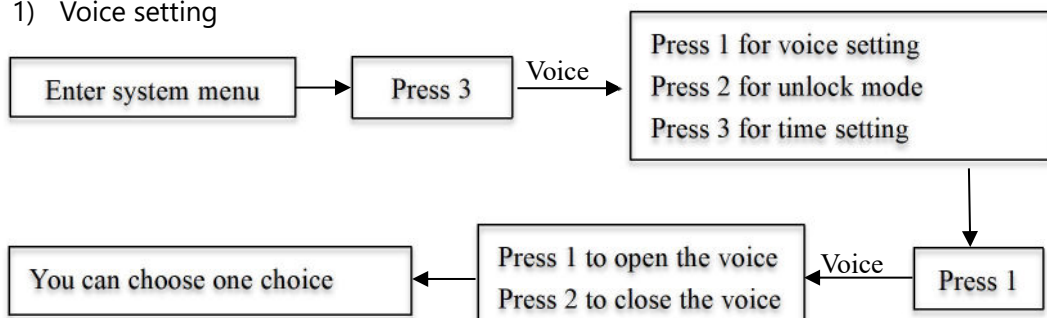


3) Delete all user information

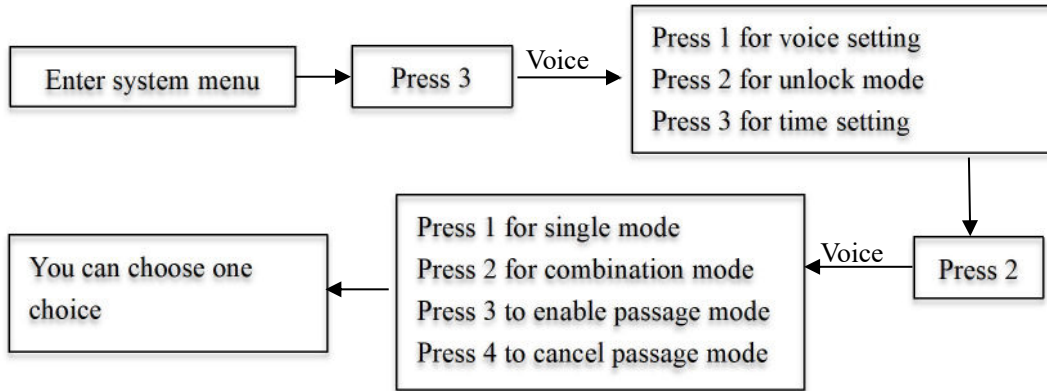


7. System setting

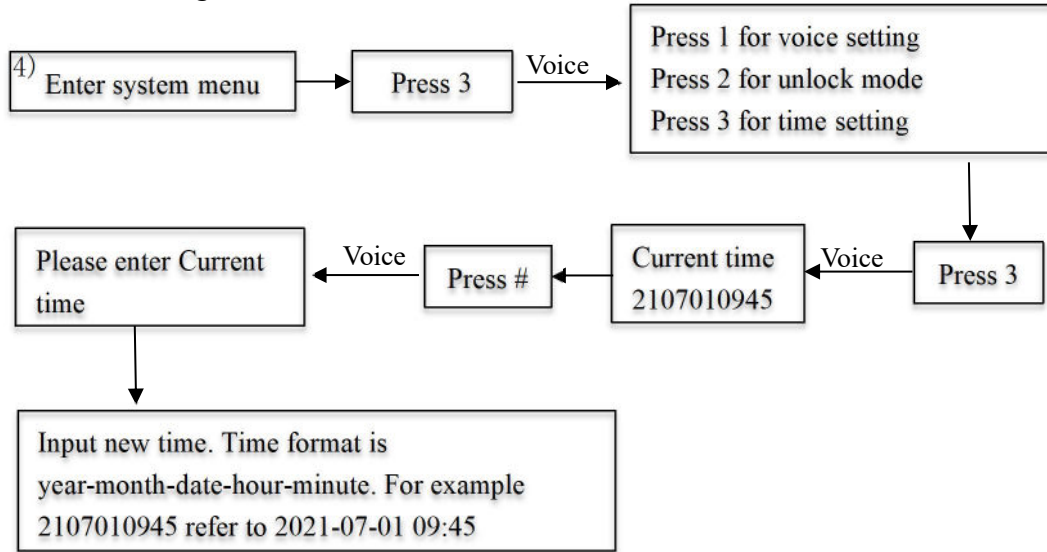
1) Voice setting



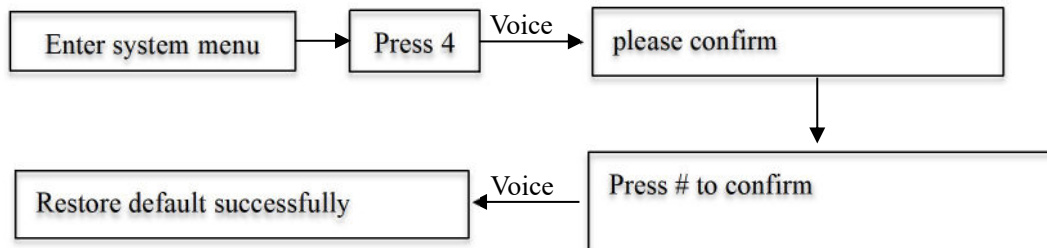
2) Unlock mode setting



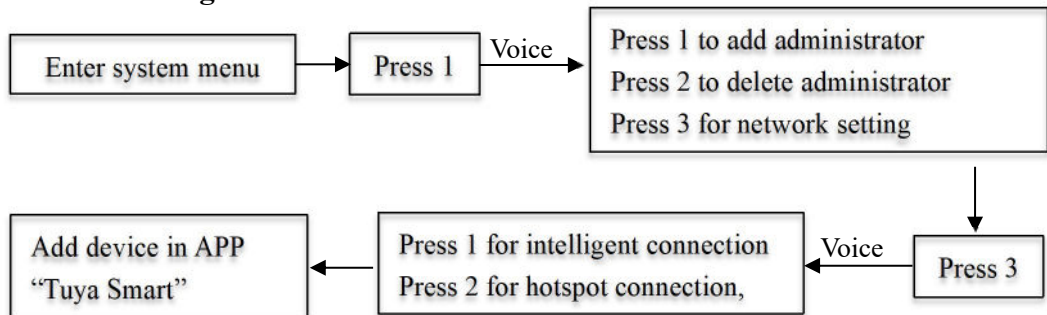
3) Time setting



8. Restore default



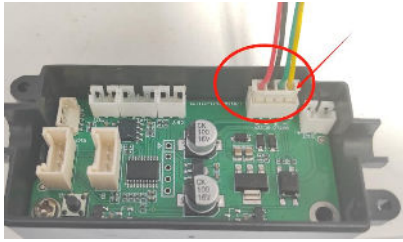
9. Network setting



10、 Building access control wiring instructions

1. Connect the red line (+) and black line (-) as shown in the figure to a DC12V power supply.
2. Connect the green line (+) and yellow line (-) to the access control as shown in the figure.

As shown in the following figure:



11、 Other notes

- ◆ Input wrong finger or password more than 5 times in a row, the system will be locked for 1 minute.
- ◆ Disguise password function: If you want input password **123456**, you can input xxxx**123456**xxxx to avoid password to be cracked.
- ◆ After battery voltage is down to 4.7V, the system will speak "Please replace battery" every time when unlocked. The lock can be unlocked for about 100 times. Please replace the battery as soon as possible.
- ◆ When unlocking, input **9#** to enter passage mode. Enter **0 #** to release channel mode.
- ◆ When electronic dead lock is enabled, only administrator can open the lock.
- ◆ Remote unlock: Wake and press **#**, system will speak "Dingdong-Dingdong-request remote unlock", then you can unlock with APP.

12、 Networking function

1. Networking Settings

Enter Administrator Settings → Press 1 Administrator Settings → Press 3 Networking Settings → Select 1 hotspot connection or 2 Smart connection based on network requirements.

- ◆ Please search and download the "Tuya Smart" APP in the app store, or scan the QR code to download it, and remind registered users according to the software;
- ◆ After the lock body enters the network configuration, open the " Tuya Smart" APP to pair the lock body, and enter the WiFi name and password used;



Tuya Smart APP

2. Software function

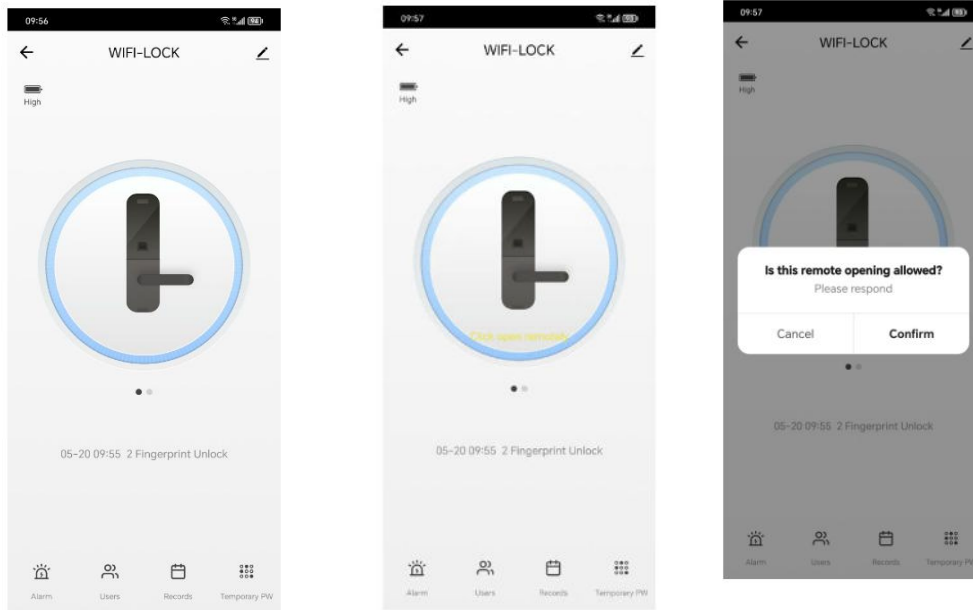


Figure 1 Main page

- ◆ Remote unlocking: Wake up the lock, enter "#" to apply for remote unlocking, after software confirmation, you can complete the unlocking operation;
- ◆ Dynamic password and temporary password;

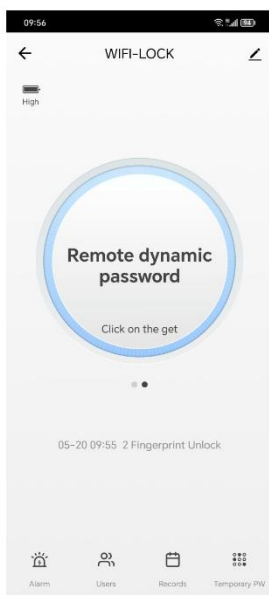


Figure 2 Dynamic cipher

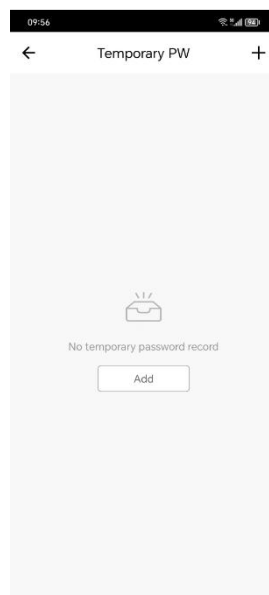
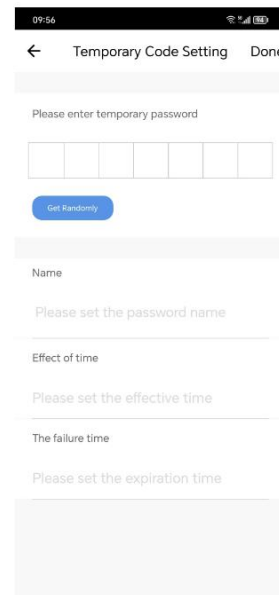


Figure 3 Temporary password



Note: The dynamic password is valid for 5 minutes and automatically expires after 5 minutes;

You can set the validity period and expiration time of the temporary password. There is no limit on the number of unlocks during the validity period.

- ◆ Door opening record function: After successful connection, the software will record the work record of the door lock, including the user and operation record of unlocking;
- ◆ Alarm record notification: The system will automatically record the wrong unlocking operation and push it in the software.

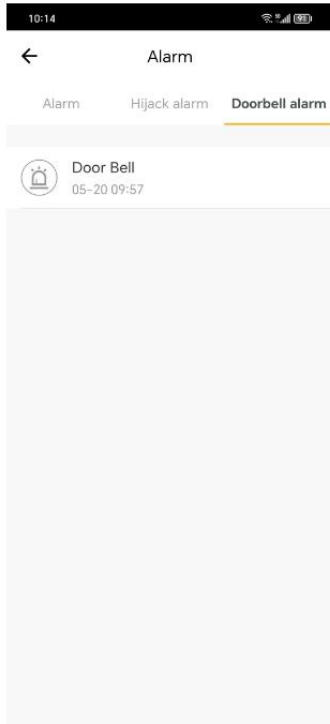


Figure 4 Alarm records

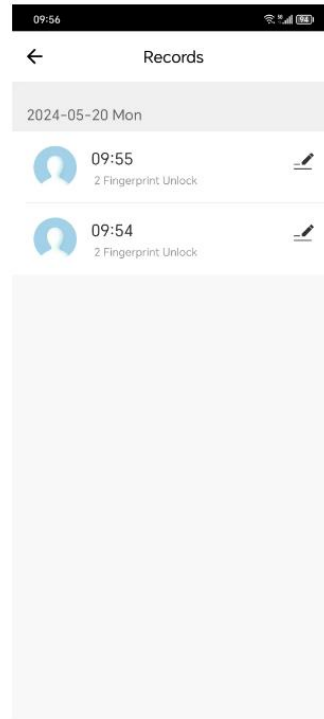


Figure 5 Door opening record

Technical parameter

Materials	Zinc alloy +ABS+iron+ tempered glass	
colour	Matte black	
Adaptive door thickness	35-70mm	
Number of administrators	10	001-010
Number of users	256	
Static current	$\leq 120\mu\text{A}$	
Dynamic current	$\leq 250\text{mA}$	
Operating voltage	4.5~6.5V	
Low voltage alarm	4.8V $\pm 0.2\text{V}$	
Emergency power supply	DC:5V	
Code bit	6 to 12 characters	
Unlocking mode	Password, fingerprint, card, key, APP	
Operating temperature	-25°C~60°C	
Working humidity	45~90%RH	