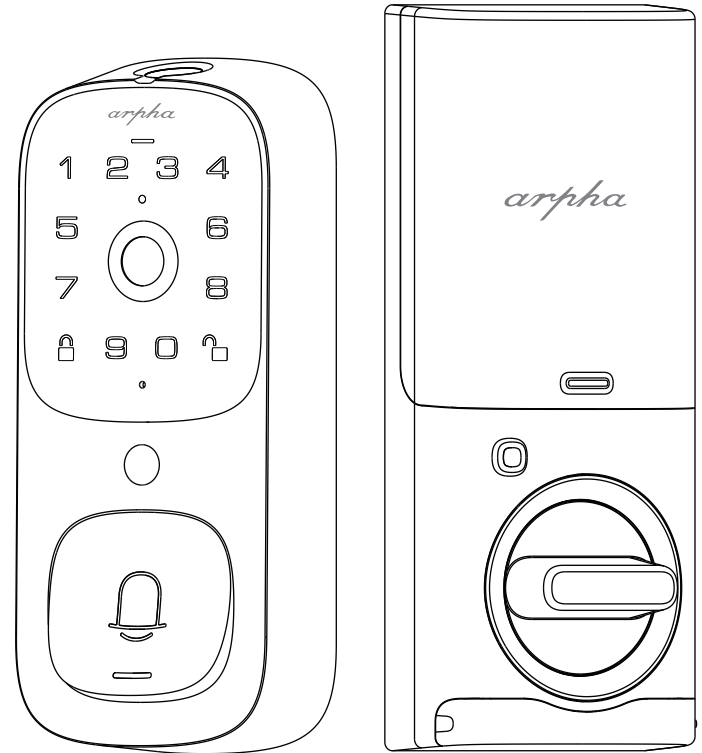


alpha



— Model: AL501 —

Video Smart Lock

QUICK START GUIDE

► Contents

P1–P3

Hardware introduction

P4

Prepare the door and check dimensions

P5–P6

Parts list

P7–P17

Installation overview

P18–P22

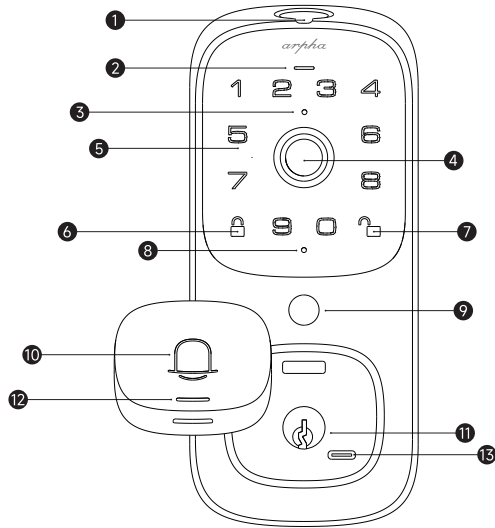
Programming instructions

P23

Video guide QR code list

► Overview

Model: AL501



❶ **Fingerprint Scanner** : Use to unlock the door.

❷ **Status Light** :

- **Green** : Succeed(Door unlocked)
- **Red** : Abnormal status detected

❸ **Ambient Light Sensor** : Detects the amount of light.

❹ **High-Definition Camera**

❺ **Touch Keypad**

❻ **Lock Button** : Press this button to lock the door.

❼ **Unlock Button** : After input the right password, press this button to unlock the door.

❽ **Microphone**

❾ **Motion Sensor**

❿ **Doorbell Button** : Press can make a doorbell call.

⓫ **Lock Cylinder**: Press can make a doorbell call.

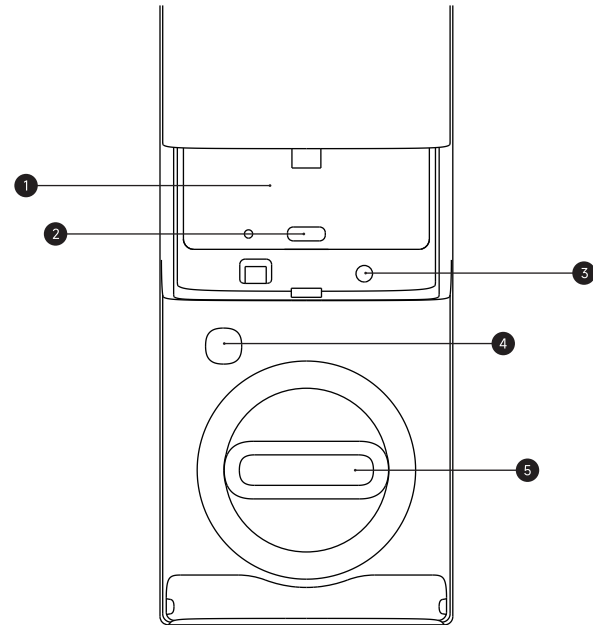
⓬ **Doorbell Light** : The ring light automatically turns on when someone approaches the door.

⓭ **Emergency Power Supply Port**: When the battery is depleted, the door lock can be powered through this interface using a portable power bank.

Note: The "Emergency Power Supply Port" is not for battery charging purpose and can only be used for emergency power supply to the lock.

► Arpha Security Video Smart Lock

Model: AL501



❶ **Rechargeable Lithium Battery**

❷ **Charging Port**

❸ **Setting Button**

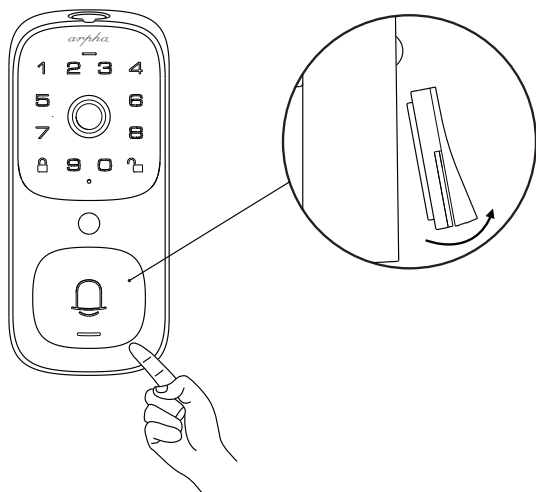
❹ **Lock & Unlock Button**

❺ **Manual Lock/Unlock Knob**

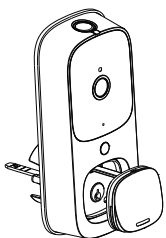
► How To Open / Close Lock Cylinder Cover

Guide of how to remove the doorbell button.

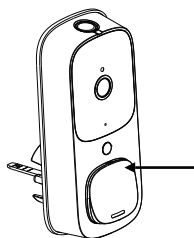
Remove:



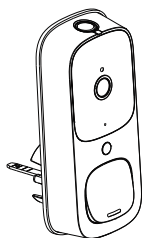
Put it back:



Align the doorbell button module with its original position and gently place it back in a vertical position.



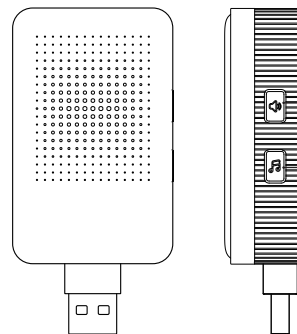
Press lightly with your thumb at the arrow location to push the upper end of the doorbell button module in.



Press the doorbell button to confirm if it has been installed properly.

► Doorbell Chime*

Model: AL501



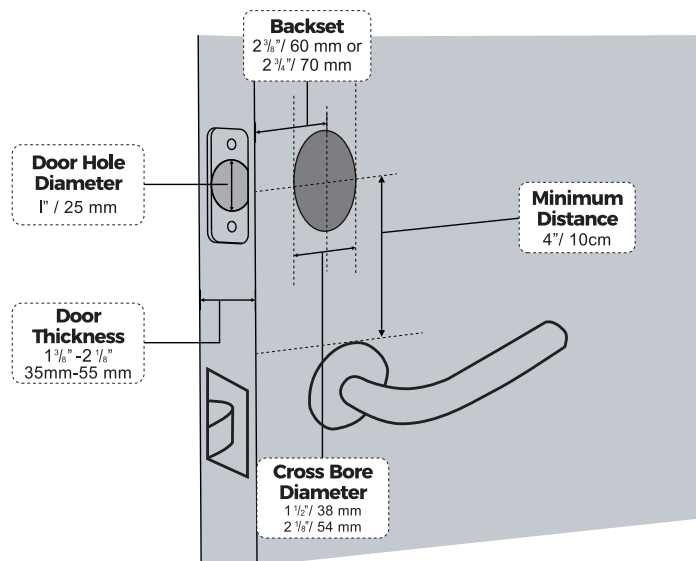
① **Doorbell Volume Setting Button**

② **Doorbell Ringtone Selection Button**

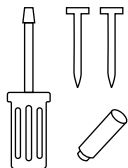
Chime accessory pairing guide:

1. Press and hold the chime volume setting button for more than 5 seconds, and release when you hear the tone.
2. Press the "Doorbell Button" of external lock at least three times until the chime rings simultaneously.

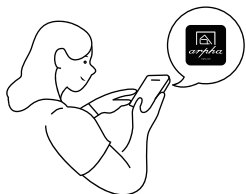
► Compatible Doors



1 Following the installation instruction to install the smart lock.



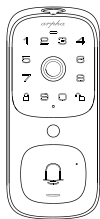
2 Download alpha plus App



3 Register and login alpha plus App



4 Calibrate the smart lock and Complete Bluetooth & Wi-Fi settings in the App





alpha plus
App

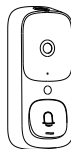






► Dinstalling Video Smart Lock

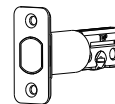
Parts List



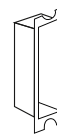
Exterior Assemble



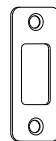
Interior Assemble



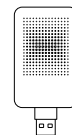
Latch



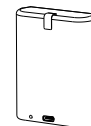
Strike Box



Strike



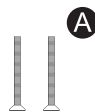
Chime



Battery



Screws cover



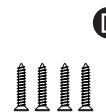
Mounting plate
Screws (x2) 40 mm



Interior Assembly
Screws (x2) 25 mm



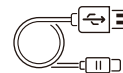
Interior Assembly
Screws (x2) 5 mm



Strike Screws
(x4) 25mm



Keys (x2)



Charging cable for battery



38mm spacer



Mounting plate
Screws (x2) 30 mm



TOOL REQUIRED

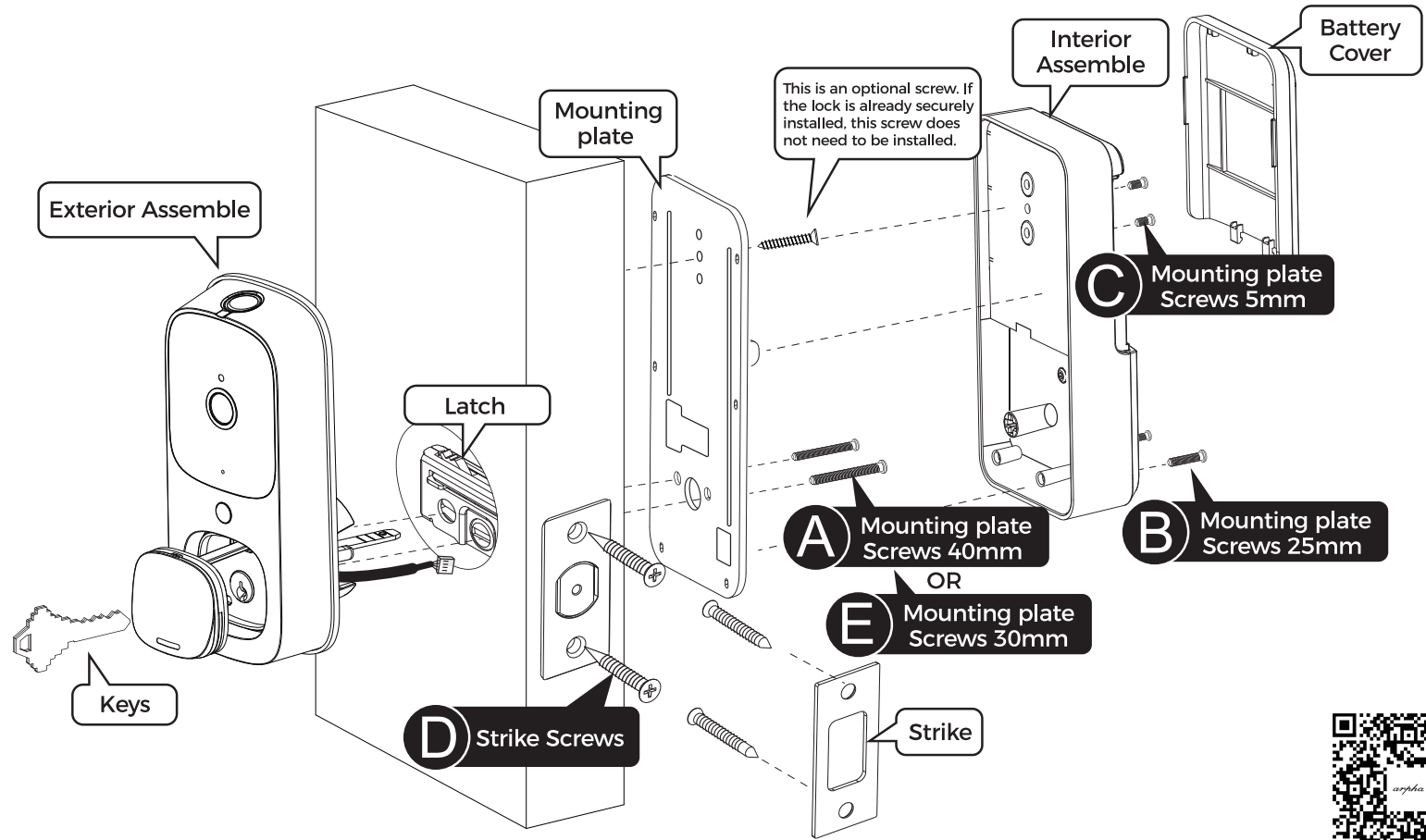
Do not use an electric screwdriver during installation.



IMPORTANT

Do not load batteries until lock is completely installed.

► Installation Overview



*45-55mm door thickness use A
*35-45mm door thickness use E

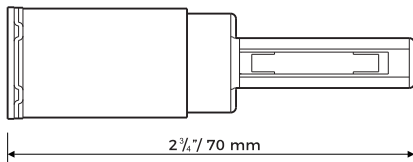
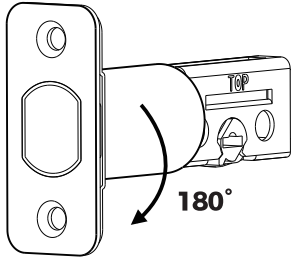
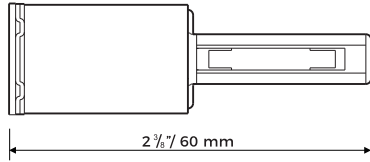


Scan the QR code to watch the video of installation guide

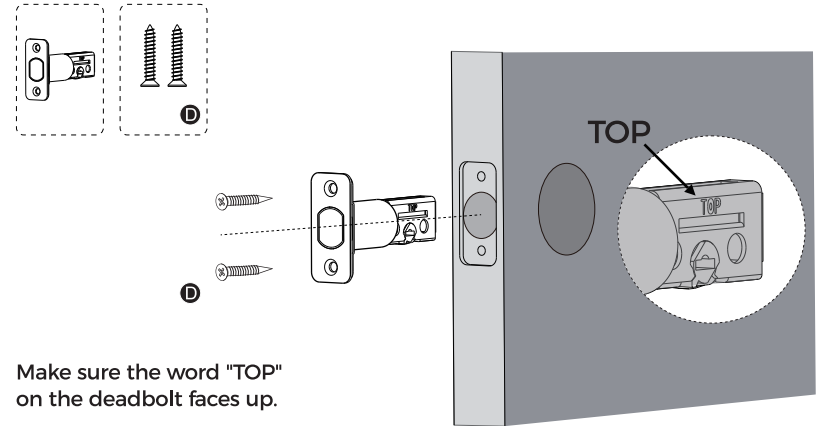
► Step 1. Install Deadbolt

1. Check your door to see if the deadbolt requires adjustment.

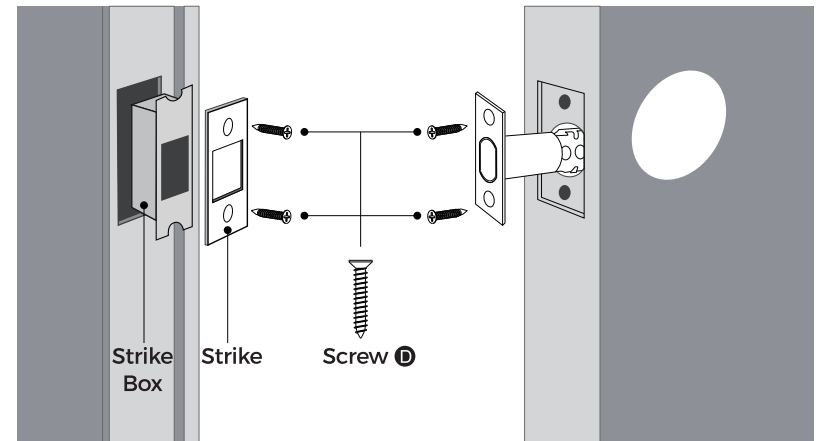
If the backset is 70mm, turn the faceplate 180° to extend the length.



2. Insert and screw the deadbolt into the doorframe.

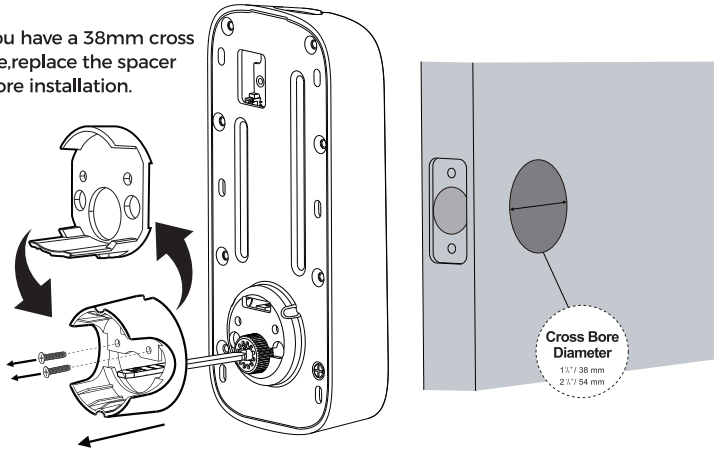


► Step 2. Install Strike Plate



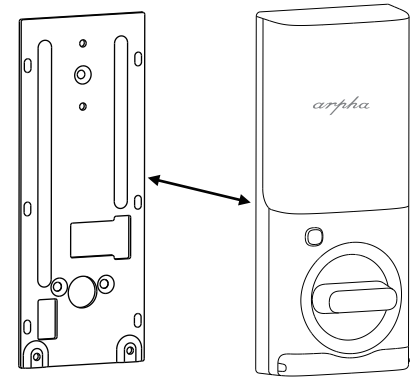
► Step 3. Install Exterior Assembly

If you have a 38mm cross bore, replace the spacer before installation.

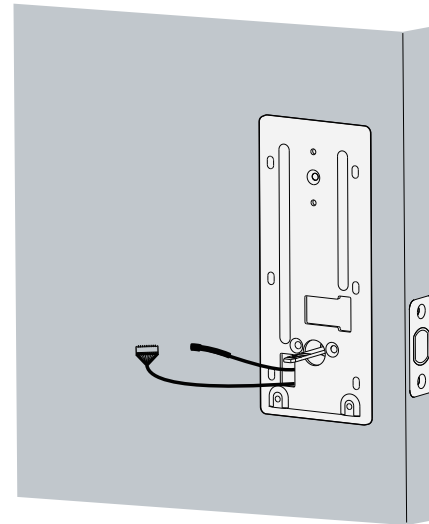


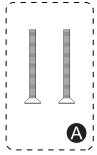
► Step 4. Install Interior Assembly

1. Detach the back cover from the interior assembly.

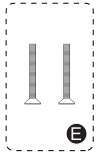


2. Run the wires through the back cover.



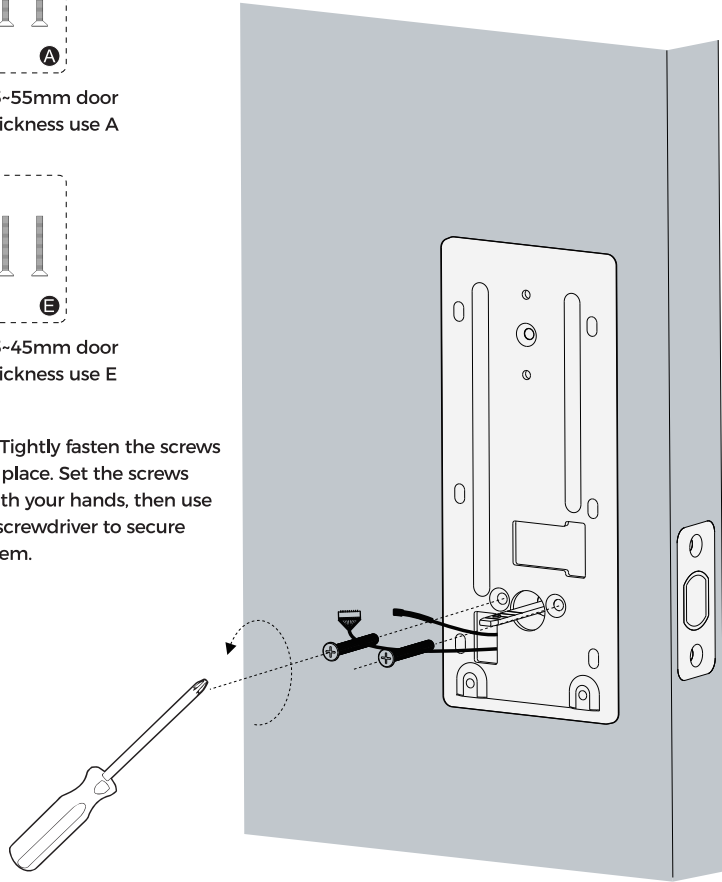


45-55mm door thickness use A



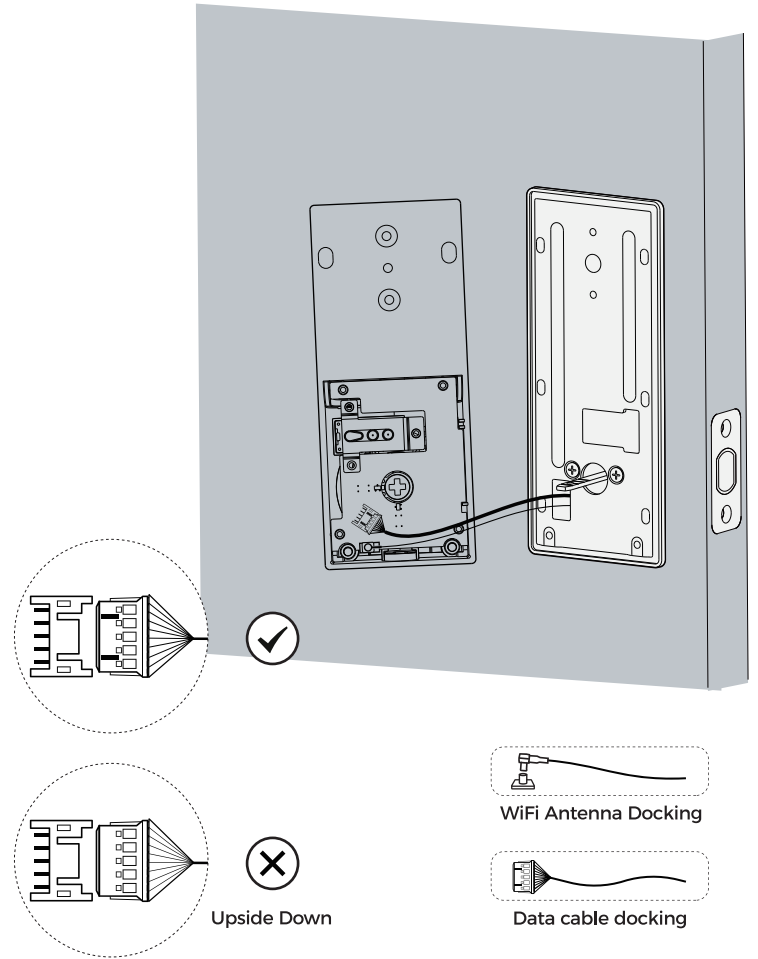
35-45mm door thickness use E

4. Tightly fasten the screws in place. Set the screws with your hands, then use a screwdriver to secure them.

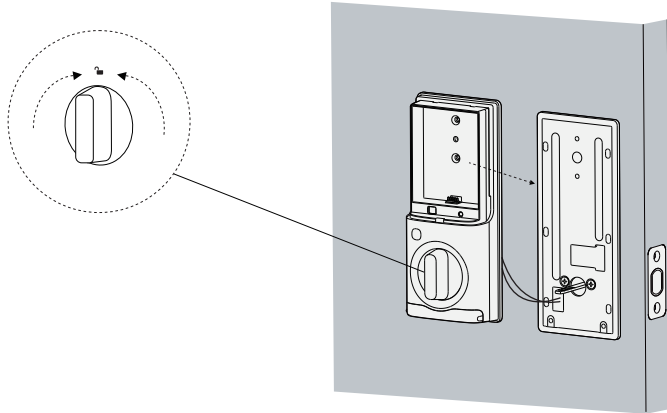


3. Secure the back cover with screws.

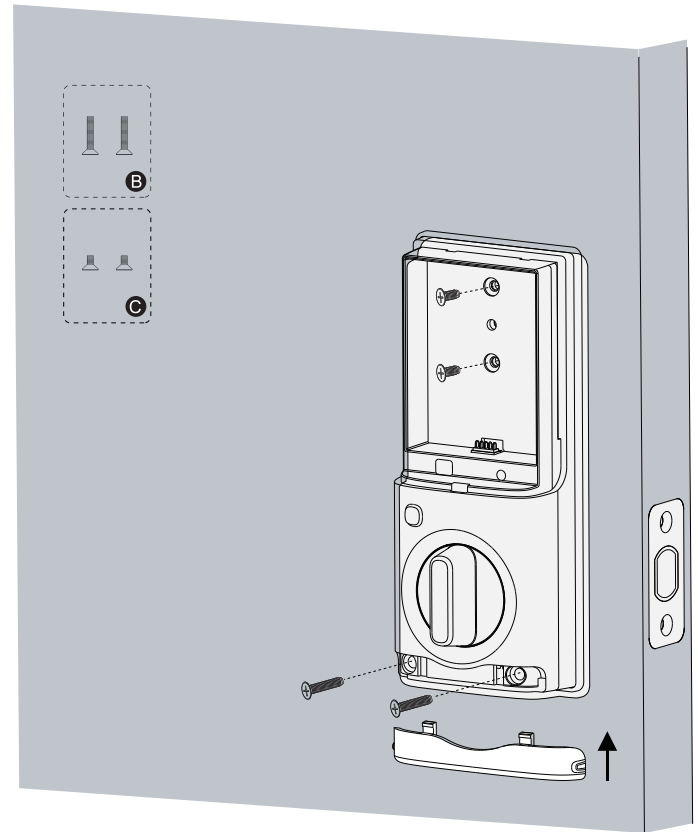
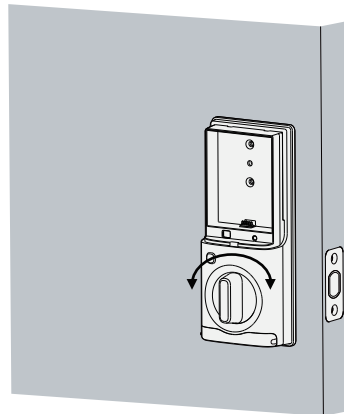
5. Wire to the interior assembly.



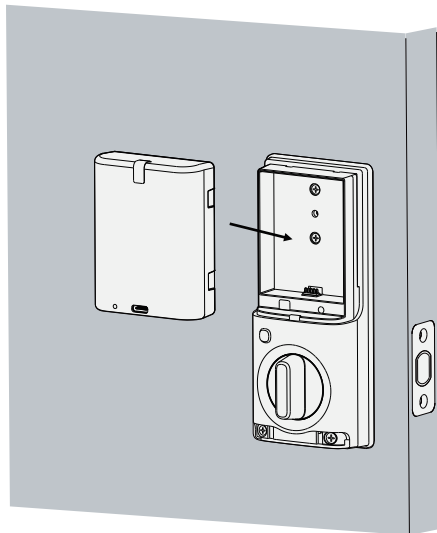
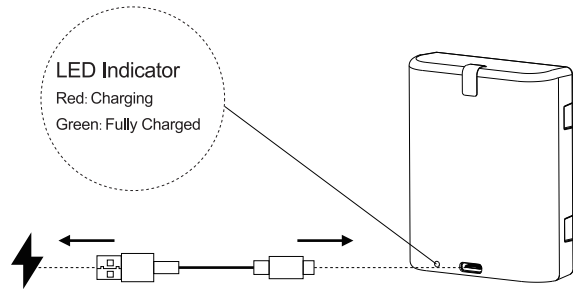
6. Mount the interior assembly. Make sure both wires are tucked into the cabin on the back of the interior assembly.



7. Check if the deadbolt retracts by turning the thumbturn.



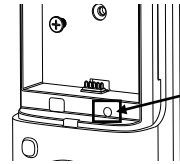
8. Fully charge the battery before first use. It might take about 6 hours.



► Apart from being able to configure your door lock through the app, you can also directly set the relevant settings on the door lock following the instructions below.

NOTE: "The following steps are not necessary; you can also set up your lock directly in the alpha plus APP."

1. Restore Factory Settings



Step1: Press and hold "setting" button, and after 4 seconds, the lock will start emitting a "beep" sound (7 times).

Step2: Hold the button until you hear the voice prompt: To confirm, Please press the unlock button.

Step3: Press the unlock button within 4 seconds, you will hear the voice prompt: Factory reset succeeded.

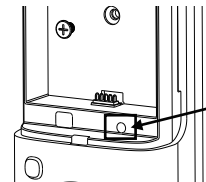


2. Set Administrator Password

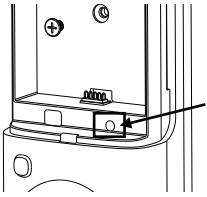
Step1: Press the setting button. If no administrator password has been set before, you will hear a voice prompt: Please set the administrator password.

Step2: After input the administrator password ,press the unlock button to confirm.

Step3: Follow the voice prompt instructions, enter the administrator password again, and press the unlock button to confirm.

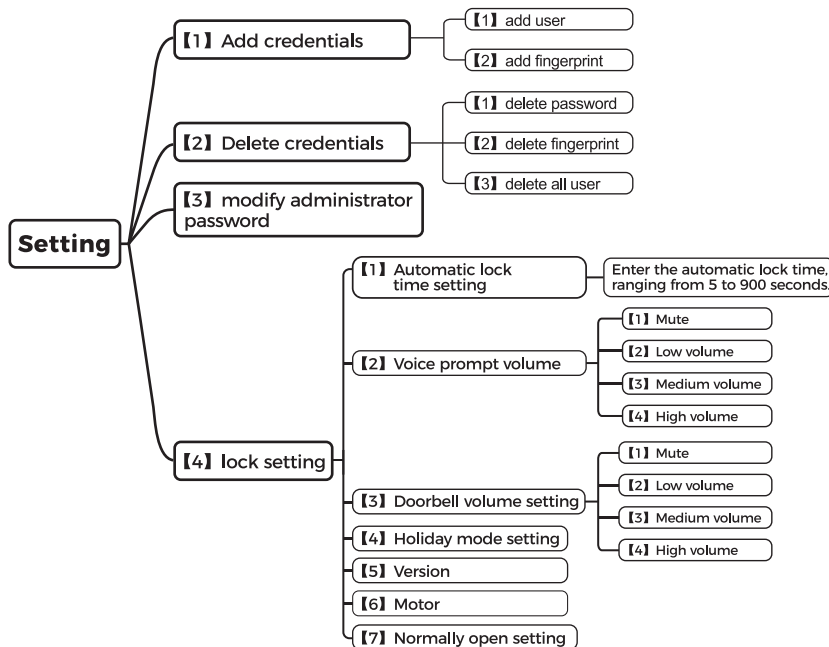


3. Enter The Function Settings Mode



Step1: Press the "Settings" button. You will hear a voice prompt saying, "Please verify administrator user." Enter the correct administrator password, then press the "unlock" button to confirm. If the password verification is successful, you will enter the setting mode.

4. Setting Mode Function List



5. Vocation Mode

When you need to go on vacation for an extended period, you can set the door lock to vacation mode. In this mode, the door lock will disable some functions and reduce response speed to minimize power consumption and prevent the battery from draining during long periods of inactivity.

Exiting Vacation Mode:

While in vacation mode, the touch keypad will no longer be activated by touch. To exit vacation mode and activate the touch keypad, you need to press and hold the "unlock" button for 5 seconds.

Enter Path:

Setting Mode → Press [4] → Press [4] → Press [1] → Press [unlock]

6. Automatic Detection Of Unlocking Direction

When you find that the actions of the lock button and unlock button are opposite to the actual door lock operation (meaning that pressing the lock button performs the unlock action), this is usually due to the door lock incorrectly determining the direction of opening. You can use this function to re-detect the opening direction and restore normal operation to the door lock.

Enter Path:

Setting Mode → Press [4] → Press [6] → Press [1] → Press [unlock]

7. Permanent Unlock Mode

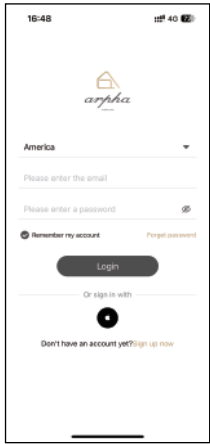
Once the Permanent unlock mode is activated, the door lock will no longer automatically lock until it is manually locked or the lock button is pressed to lock it.

Note: When manually locking or pressing the lock button to lock, the system will automatically exit the constant unlock mode.

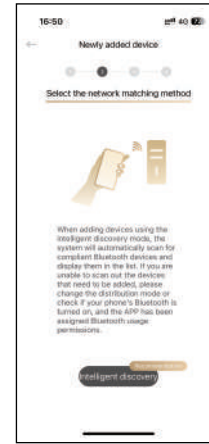
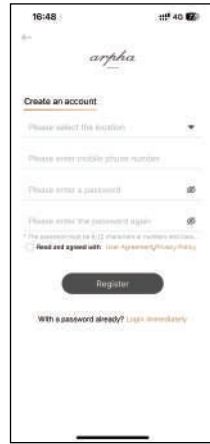
Enter Path: Setting Mode → Press [4] → Press [7]

► App User Guide : Connect The Lock To Internet

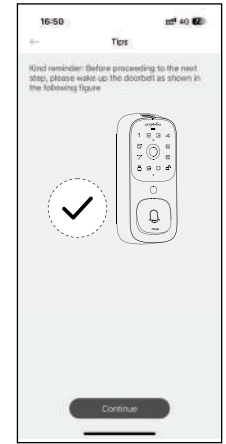
Note: WiFi must be 2.4G



Sign up a account



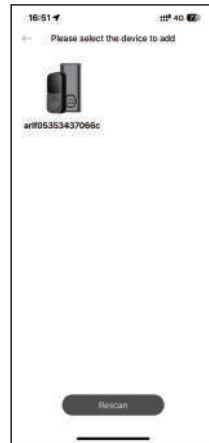
Press "intelligent discovery" button



Follow the video to active lock.
Then press "continue" button



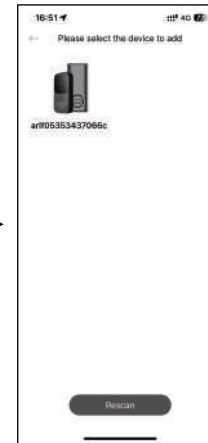
Press "Add a device" Button



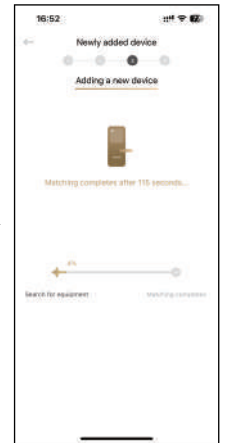
Select "AL501"



Select the lock
want to add



Connect your phone to the wifi,
and input the wifi password



Connect your phone to the wifi,
and input the wifi password

► Video Guide

Scan the QR code to watch the video instruction on how to perform the operation.



Installation guide



Reset



Set up Wi-Fi
on your device



Add fingerprint



Add password



Live video stream



Unlck with real key
& emergency
power supply